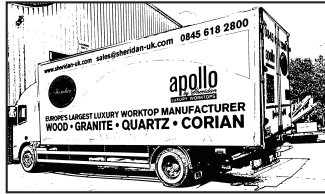


Site Preparation for Template & Installation Visits



1 During the visit the consumer and/or authorised signatory, must be present to discuss, agree and sign off the required design and details of the order.



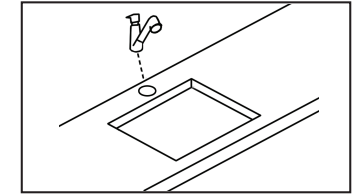
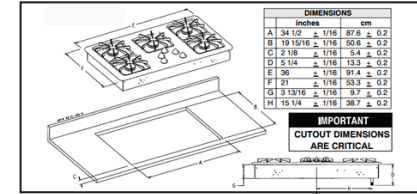
2 A valid permit or similar must be provided free of charge (where relevant), for template, delivery and installation.

3 WE CAN TEMPLATE WHEN TEMPORARY OR EXISTING TOPS ARE IN PLACE WHEN...

- There is a clear visible path to the back wall edge
- Final plastered wall finish is present and not to be changed after template
- No Tiles, upstands or cladding/splashbacks are installed
- The worksurface area is clear of all household items including plug-in appliances

WE CANNOT TEMPLATE A KITCHEN WHEN...

- Full worksurfaces are in-situ; including tiles, upstands, cladding /splash backs
- There are household items including plug-in appliances present across the worksurfaces
- When Belfast type sinks are in situ with Temporary Worksurfaces fitted over the sink edges. All four sides of the sink area need to be exposed to enable templating to take place



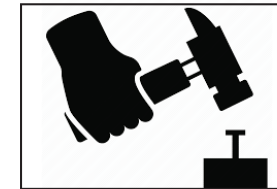
4 The sinks and taps, hobs and other appliances that are to be installed into the worksurfaces must be available for the Templater, together with their installation instructions and any other specific requirements. See cover list.

5 The planned positions of sinks taps, hobs and other appliances that are to be installed into the worksurfaces must be finalised and available on site for the template.

6 Gaps greater than 600mm require battening and units that are greater than 600mm require softwood battening (min 20 x 50mm) in the service void.

7 When splashbacks are required, all items such as cooker hoods, wall units, sockets and switches must be in place for templating

Support needed if over 600mm
min 20 x 50mm softwood timber battens



8 All alterations to walls/structures must be complete before template, this includes plastering, boarding and skimming to all walls and window reveals. Tiling and making good should be completed post installation.

9 All units including peninsulars, islands and breakfast bars, to be fixed to the wall, level side to side and front to back and set at their final height, including any additional fittings, such as legs.

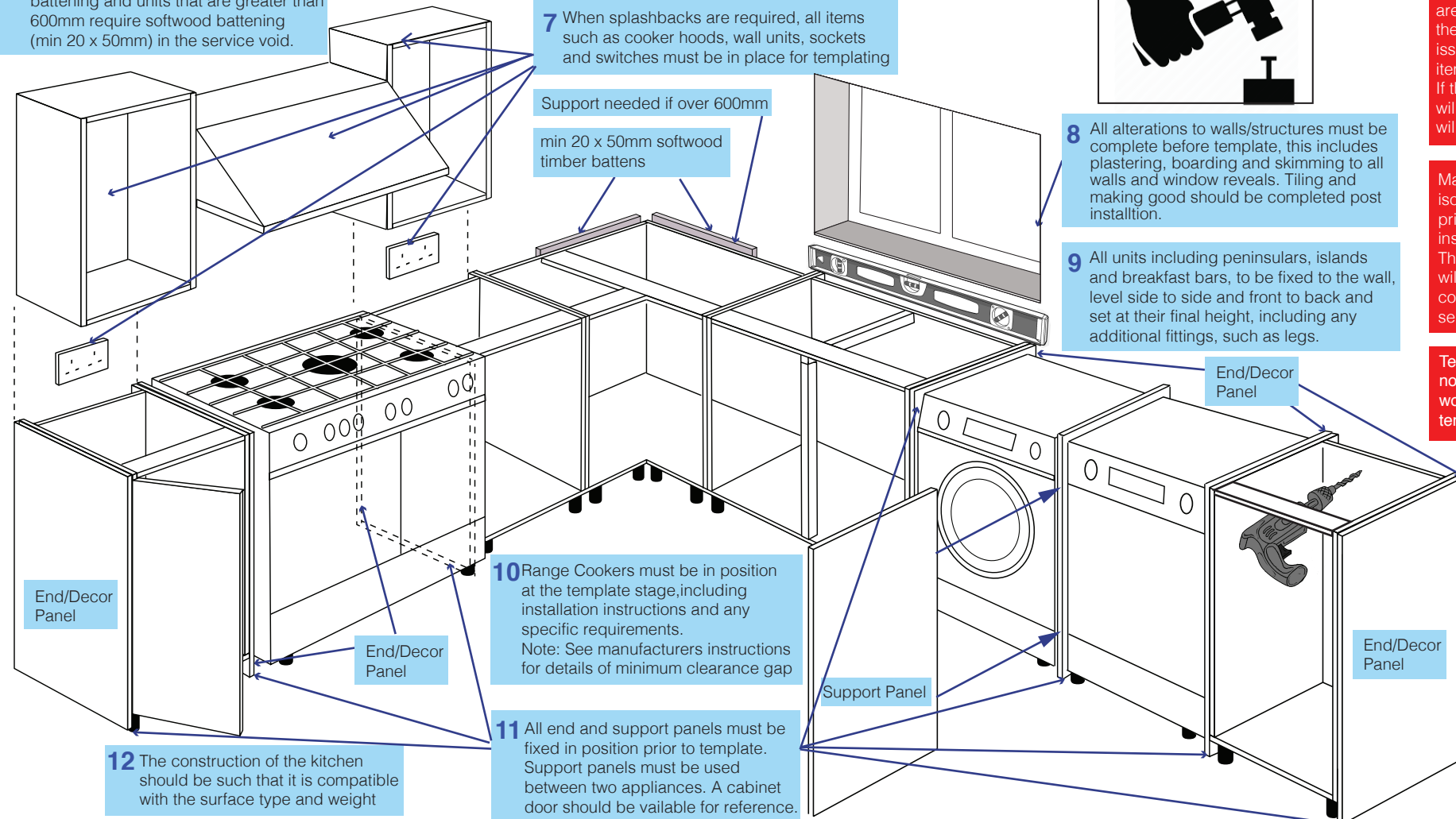
ABORTED VISITS

If one or more of these steps are not complete or available the surveyor or installer will issue a 1 hour notice for the items to be completed. If this is not possible, the visit will be aborted and a charge will be applied.

Mains service should be isolated and made safe prior to worksurfaces installation.

The worktop supplier will not disconnect or connect any main services.

Temporary worksurfaces are not fitted or supplied by the worktop supplier between templating and installation.



10 Range Cookers must be in position at the template stage, including installation instructions and any specific requirements. Note: See manufacturers instructions for details of minimum clearance gap

11 All end and support panels must be fixed in position prior to template. Support panels must be used between two appliances. A cabinet door should be available for reference.

12 The construction of the kitchen should be such that it is compatible with the surface type and weight